



14500 Kinsman Rd.  
P.O. Box 479  
Burton, OH 44021

... For everything to keep you growing.

SUMMER 2009

Spice Up Holiday Sales with ...

## Spruce Tip Pots

Spruce Tip Pots from Dillen offer a unique product niche for winter sales. This 12 1/2-inch container, available in our exclusive metallic cranberry color, is ideal for potting up decorated greens and adding a touch of style to outdoor decorations that last through the winter. *Item #96-3060MC*



**\$53.99/case**

20 units/case

15% OFF orders of 25 cases or more



Please recycle.

ADEL, IA 1-888-693-1473 | JOLIET, IL 1-800-413-0924 | KANSAS CITY, KS 1-888-713-9009 | BELLEVILLE, MI 1-800-883-2234 | JENISON, MI 1-800-883-4234 | KALAMAZOO, MI 1-800-883-7234 | LOUISVILLE, KY 1-866-940-3779  
MINNEAPOLIS, MN 1-800-798-2891 | LANCASTER, NY 1-800-883-3234 | BURTON, OH 1-800-883-0234 | PORTLAND, OH 1-800-843-2830 | XENIA, OH 1-800-883-5234 | HARMONY, PA 1-800-883-8234 | BROOKFIELD, WI 1-800-269-8816

# 2009 BFG Hort Expos

## NEW PRODUCTS! SPECIAL PRICING!

### BFG HORT EXPO - MINNESOTA

August 25th and 26th  
Earle Brown Heritage Center  
Brooklyn Center, MN

### BFG HORT EXPO - ILLINOIS

September 1st  
The Stonegate Conference Centre  
Hoffman Estates, IL

### BFG HORT EXPO - OHIO

September 29th  
Aladdin Shrine Center  
Columbus, OH

**PLUS!** BEG OPEN HOUSE - NEW YORK: September 24th, BFG Supply Co., Lancaster, NY

Don't miss out! Register today at <http://hortexpo.bfgsupply.com>

## House Hunting? ... Look no further than a DeCloet house.

In an industry as specialized as greenhouse manufacturing, experience is everything. For more than two decades, DeCloet Greenhouse Mfg. has built a solid reputation on the integrity of its structures and its name. Talk to your BFG sales rep about custom designing a DeCloet gutter connected greenhouse to suit your individualized growing needs.

### The DeCloet Advantage

- Faster and easier to assemble
- Exclusive and unique design reduces clutter and maximizes growing space
- Increased light transmission
- 11 Gauge heavy gutter -- an exclusive DeCloet design -- provides added strength and structural integrity
- Posts and gutters are galvanized after manufacture for longer rust-free life
- Exclusive oval bows provide consistency in strength and integrity, available on 4-foot and 6-foot centers
- Custom designs to meet your special requirements and budget



## Watch Your Energy Savings Add Up!



VRE offers an economical, long-lasting heat retention, thermal shading or black out system that will pay for itself in no time.

VRE's Shade & Save™ systems provide the following benefits:

- Reduced heating costs
- Reduced cooling costs
- Reduced water consumption
- Reduced condensate drip damage
- Improved air and soil temperature control
- More comfortable working environment
- Less plant stretch and stress
- Better quality and more consistent crops
- More balanced environment, i.e. control of light, temperature and humidity



## Earn a FREE Injector with Your Cherry Creek Order

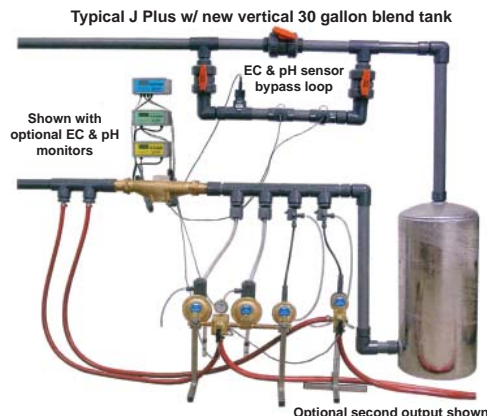
Get a FREE 20 gpm *Dosatron* injector unit with any Cherry Creek order totaling more than \$5000. Cherry Creek Systems – manufacturer of automated irrigation booms, basket watering systems, and conveyor systems – can significantly reduce labor costs and water use. Improve your efficiencies and earn a FREE *Dosatron* injector at the same time! Place your order of \$5000 or more by October 30, 2009 to qualify.



# BUY NOW – PAY LATER!

January 1, 2010 Terms on H.E. Anderson injector purchases over \$1000!

Accuracy, chemical compatibility, reliability and dependability all come together in the J Plus Series of injectors from H.E. Anderson. The J Plus Series Injectors make accurate chemigation as easy as turning a dial. Inject single or multiple fertilizers at the same time. Virtually no maintenance, easy installation and user-friendly controls make the J Plus Series a popular choice for growers. Order by October 1, 2009 for January 1, 2010 terms.



## NEW from H.E. Anderson!

Introducing the new D Series Wall Mount for use with either new or existing Andy (DD) Series and Andy Jr. (DB) Series injectors.



# REPLACEMENT PROGRAM

With A Great Spring Behind Us, It's Time To Upgrade Or Replace Your Injectors!

Dosatron is offering special pricing on all upgraded or replacement injector units.



Whether you're looking to upgrade to a larger injector or replace a well-used unit, Dosatron has the right product to fit the bill. Best of all, you don't even have to return your old one!



WATER-POWERED INJECTORS		
BFG ITEM #	DESCRIPTION	LIST PRICE
26-0109A	14 GPM Injector	\$285.00
26-0103A	20 GPM Injector	\$465.00
26-0100	40 GPM Injector	\$635.00
26-0104	100 GPM Injector	\$1990.00
26-0109B	DosaCart	\$401.00
FILTER KITS		
BFG ITEM #	DESCRIPTION	LIST PRICE
26-0118	3/4" 14 GPM Filter Kit	\$30.63
26-0118C	1" 20 GPM Filter Kit	\$44.79
26-0118A	1 1/2" 40 GPM Filter Kit	\$79.00
26-0118D	2" 100 GPM Filter Kit	\$218.21

\*Program ends September 30th, 2009.

Not ready for a replacement? Make your 14 GPM injector portable with the unique Dosa-Cart, or get a new filter kit for your existing units to ensure accuracy and continued trouble-free performance.

## Dosing Solutions from Dosmatic

Non-electric, water-driven proportional fertilizer injectors from Dosmatic offer accurate and consistent dispensing of fertilizers, pesticides, herbicides, fungicides, algacides, acids, disinfectants and other water-soluble products at high and low flow rates.



**SPECIAL OFFER** Order by September 30, 2009 and get 7% off all Dosmatic injectors.

# BREAKTHROUGH GREENHOUSE HEATING SOLUTION FROM MODINE

**93% EFFICIENCY – 100% CHANCE OF SAVINGS**



Introducing the new Effinity<sup>93</sup> (PTC series) greenhouse unit heater from Modine – the most efficient gas-fired, condensing unit heater in North America. With six models available ranging from 135,000 to 310,000 BTU/hr, all operating at 93% efficiency, the Effinity<sup>93</sup> will dramatically lower your energy costs through decreased fuel consumption.

**RAISE YOUR COMFORT LEVEL. LOWER YOUR ENERGY COSTS.**

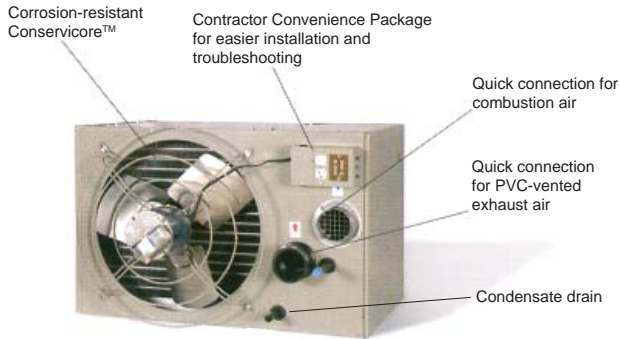
POTENTIAL ANNUAL GAS SAVINGS FROM TWO EFFINITY <sup>93</sup> MODELS Versus Comparable Power-Vented and Gravity-Vented Gas Fired Unit Heaters*				
	PTC 215 (200MBH Output)		PTC 310 (288MBH Output)	
CITY	POWER-VENTED	GRAVITY-VENTED	POWER-VENTED	GRAVITY-VENTED
Cleveland, OH	\$762	\$1,706	\$1,097	\$2,457
Chicago, IL	\$798	\$1,787	\$1,149	\$2,573
Grand Rapids, MI	\$867	\$1,943	\$1,249	\$2,798
Louisville, KY	\$561	\$1,256	\$807	\$1,808
Minneapolis, MN	\$968	\$2,169	\$1,394	\$3,124
Buffalo, NY	\$834	\$1,869	\$1,201	\$2,691

\* Savings are realized by comparing the Effinity<sup>93</sup> BTU/hr output to 78% seasonally efficient power-vented and 65% seasonally efficient gravity-vented unit heaters. Costs were determined by applying appropriate degree days at 65°F indoor design temperature under full year, 24/7 operation, using natural gas cost of \$0.80/Therm (100,000 BTU's).

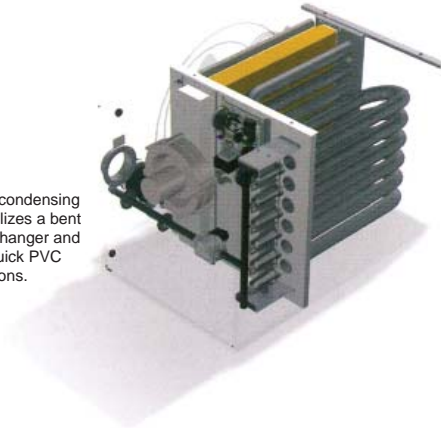


## EXCLUSIVE CONSERVICORE™ TECHNOLOGY

Designed specifically for the highly corrosive environments found in greenhouses, Modine's Conservicore technology features a high-grade stainless steel secondary heat exchanger built to withstand acidic condensate. The result? Significantly longer heater life when compared to competitive units built with aluminum secondary exchangers.



The Effinity<sup>93</sup> condensing unit heater utilizes a bent tube heat exchanger and is ready for quick PVC pipe connections.



## WHAT DOES THIS MEAN FOR YOU?

**FUEL SAVINGS** – Potentially save thousands of dollars versus a non-condensing unit heater

**DEPENDABLE PERFORMANCE** – Utilizes Modine's Conservicore™ technology to eliminate acidic corrosion concerns, extending the life of the unit

**CONSISTENT TEMPERATURES** – Gentle air circulation to maintain uniform wall-to-wall greenhouse temperature

**SAFER GROWING ENVIRONMENT** – Harmful combustion fumes are vented outside, away from plants

**AMERICAN-MADE QUALITY** – Still proudly made in the USA for over 90 years.

## A WIDE RANGE OF AVAILABLE MODELS

	PTC135	PTC155	PTC180	PTC215	PTC260	PTC310
<b>BTU/hr Input</b>	135,000	155,000	180,000	215,000	260,000	310,000
<b>kw</b>	39.6	45.4	52.7	63.0	76.2	90.8
<b>Thermal Efficiency</b>	93%	93%	93%	93%	93%	93%
<b>BTU/hr Output</b>	125,550	144,150	167,400	199,950	241,800	288,300
<b>kw</b>	36.8	42.2	49.0	58.6	70.8	84.5

## PUT GREEN IN YOUR POCKET, NOT JUST YOUR GREENHOUSE

**HUGE SUMMER DISCOUNTS AVAILABLE, OR TAKE ADVANTAGE OF 5% - 10 DAY OR NET 11/15/09 TERMS.**

The Effinity<sup>93</sup> heater is so energy-efficient it may qualify for local rebate & tax incentive programs. Visit [www.dsireusa.org](http://www.dsireusa.org) for details by state, and to determine eligibility.



**THE EFFINITY<sup>93</sup> FROM MODINE.  
IN COMPARISON, THERE'S NO COMPARISON.**



# CORNER.....

## SuffOil-X™



SuffOil-X™ is a unique oil-based formulation that is an ideal choice for effective insect, mite and disease control in a broad range of greenhouse, nursery and vegetable crops. SuffOil-X contains ultra tiny oil particles, assuring that a very thin, uniform coating of oil is applied to the plant. SuffOil-X is highly effective at smothering and killing pests while maintaining plant safety. Ships direct prepaid.



ITEM #	DESCRIPTION	SIZE	LIST PRICE
19-0551C	SuffOil-X	1 gal.	\$34.31
19-0551D	SuffOil-X	2.5 gal.	\$70.69

## Clevis

Maximize preventative and curative control while minimizing resistance with this dual-action systemic fungicide. Clevis provides broad spectrum control of numerous diseases in ornamentals. Clevis is a pre-mixed formulation of two active ingredients (myclobutanil and mancozeb). Clevis is labeled for scab, powdery mildew, rust and 17 other diseases and is an economical and effective chemical choice for nurseries.



ITEM #	DESCRIPTION	SIZE	LIST PRICE
19-1064D	Clevis	2 lb.	\$22.17

## Roundup ProMax



Roundup ProMax® is an improved formulation of Roundup with 30% lower rates. Rainfast in 30 minutes, this NEW formulation is the most concentrated Roundup Pro® ever, giving it a higher concentration of active ingredient in every gallon. Mixing rates vary depending on application. A mixture of 2 oz. per gallon of water can be used for most applications. Includes a convenient measuring cup.



ITEM #	DESCRIPTION	SIZE	LIST PRICE
19-1058A	ProMax	1.67 gal.	\$192.19
19-1058B	ProMax	30 gal. drum	Call



**Purchase \$500 or more of OHP products through BFG between July 1 and September 30, 2009 and receive a \$25.00 VISA gift card from OHP.**

Adept	Naturalis L
Aliette	OHP 26 GT-O
Azatin	OHP 6672
B-Nine	Paczol
Casoron	Pedestal
Chipco 26019	Pylon
Compass O	Scout Blue Sticky Traps
Cycocel	Sextant
Decathlon	Shuttle O
Dimilin	SoilGard
Discus	Strike
FenStop	Suffusion
Floramite	Terraclor
Hormodin	Terraguard
Judo	Terrazole
Kontos	Triact 70
Marathon	Veranda O

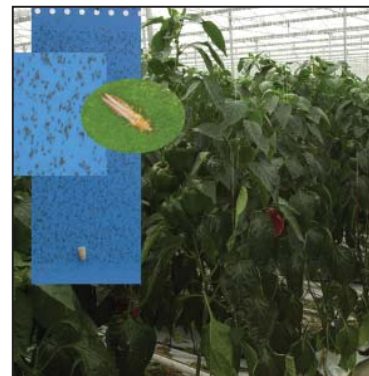
The gift card will be sent by November 15, 2009 and is limited to one per grower customer.

## Trick Your Thrips ... with Thripline from Syngenta

**Improve Western flower thrips monitoring and trap them at the same time.**

Thripline, from Syngenta, contains a synthetic pheromone for Western flower thrips that attracts both males and females. It combines this pheromone with Taki-traps® to catch thrips.

How it works: Thripline's pheromone system works by giving a mating signal to the Western flower thrips. The male and female thrips then emerge onto the top of the crop looking for a flower surface on which they can display. The Taki-traps® act as an alternative display area and in the process, catch the thrips.



Thripline is designed to improve the sensitivity of monitoring traps for thrips, particularly at low levels of infestation or in easily damaged crops. This will permit growers to introduce additional control measures before thrips populations reach damaging levels.

### THRIPLINE AT A GLANCE

- Maximum sensitivity in thrips monitoring.
- Pheromone lure enhances trapping of Western flower thrips
- Lures both males and females
- Fits into a thrips IPM program
- Displaying thrips on leaf surfaces are more susceptible to contact action of spray treatments

ITEM #	DESCRIPTION	SIZE	LIST PRICE
19-0011X	Thripline with Taki-trap	10/pk	\$41.47

*Ships direct; freight added.*

# ORGANIC OPTIONS FOR PEST CONTROL

THESE PRODUCTS FIT RIGHT INTO TODAY'S TREND TOWARD "GREENER GROWING."

INSECTICIDES			LIST PRICE
19-0637A	PureSpray Green	1 gal. All-season horticultural oil for insect, mite and disease control.	\$43.10
19-0092	Gnatrol	16 lb. Highly selective, biological larvicide for use in greenhouses to control fungus gnat larvae.	\$426.21
19-0061	DiPel PRO DF	1 lb. Effective, fast-acting, broad spectrum control of caterpillar/worm pests.	\$16.55
19-0226	Naturalis L	1 qt. Contact biopesticide for control of many pests, including whiteflies, thrips, and aphids.	\$71.43
FUNGICIDES			LIST PRICE
19-0571J	CEASE	1 gal. Controls foliar fungal and bacterial pathogens naturally.	\$69.83
19-0571K	RootShield WP	3 lb. Preventative, sprayable biofungicide protects roots from many pathogens.	\$232.76
19-0571B	RootShield G	40 lb. Preventative granular biofungicide protects roots from many pathogens.	\$368.97
19-0551	MilStop	5 lb. Cures powdery mildew and prevents many other foliar diseases.	\$68.53
13-0129	Actinovate SP	18 oz. Controls soil-borne diseases (drench) and controls/suppresses foliar diseases (spray).	\$107.30
13-0128	Actino Iron	50 lb. Soil additive suppresses/controls root rot and damping off fungi.	\$101.34
19-0323	Triact 70	2.5 gal. Economical, neem-based broad-spectrum fungicide/miticide/insecticide.	\$153.10
19-0572Z	SoilGard	7.5 lb. Biological fungicide that controls damping off and root rot pathogens.	\$99.77
OTHER			LIST PRICE
19-0821	SLUGGO	10 lb. Easy-to-use, granular formulation kills snails and slugs through dehydration.	\$57.54
19-0609D	GreenClean Pro	50 lb. Alternative to copper-based products for algae control.	\$138.66
19-0760	ProGibb T&O	1 qt. Potent PGR that promotes stem elongation and flowering.	\$67.48

## GET YOUR SPRAY ON!

### PERFORMANCE ENHANCING PRODUCTS THAT WORK

#### Indicate Phase 5

Since most pesticides work better at lower pH, use Indicate Phase 5 to reduce and buffer the pH of spray solutions which turn pink as soon as the optimum pH level (4.5-5.5) is reached.

19-0409 1 gal. **\$75.94**

#### Aqua-Gro L



Developed specifically to improve even water distribution in soilless mixes so they perform at full capacity.

13-0038 1 gal. **\$86.29**

13-0037 2.5 gal. **\$193.97**

#### CapSil



Enhances performance of virtually all foliar pesticide applications, ensuring thorough coverage of the entire leaf surface.

19-0398 1 gal. **\$104.83**

#### Preference

Nonionic surfactant improves performance of pesticides and fertilizers by reducing the surface tension of the spray droplets.

19-0505 1 gal. **\$27.86**

#### Hi Light Blue Dye

Blue colorant for marking spray applications, providing more accurate and uniform applications of pesticides and liquid fertilizers.

19-0203 1 qt. **\$22.48**



#### Complex Spreader Sticker

Get improved pesticide performance through better coverage, increased adhesion, and enhanced penetration of the leaf wax. Ideal for use with herbicides.

19-0404A 1 gal. **\$53.57**



#### Cleary Defoamer

A nonphytotoxic foam suppressing application aid.

19-4002 1 qt. **\$12.12**



#### Cleary Tank Cleaner

An effective and economical alkaline solution for cleaning spray equipment while inhibiting rust.

20-0470 1 qt. **\$7.14**



### Solar-Ice – 4-Year, 6 mil Greenhouse Film

- Next-generation film that actually lowers greenhouse temperatures in the daytime heat.
- Uses controlled diffusion to influence what light reaches greenhouse plants.
- Increases the amount of useful light while reducing harmful infrared radiation.

**ORDER NOW!**  
**SUMMER DISCOUNTS END AUGUST 31, 2009**

### Thermax – Exceptional Condensation Control with Outstanding Thermal Quality

- 6-mil film designed to provide a tough long-life film with built-in anti-condensate, thermal features, bee compatibility and light diffusion.
- UV stabilized to withstand a maximum of 4 years of film life under normal circumstances.
- Warranted for 4 years against manufacturing defects.



## Now's a great time to buy your twinwall polycarbonate!

Green.tek

ThermaGlas multi-wall polycarbonate sheets from Green-Tek offer high light transmission, maximum impact resistance, and superior insulation. This combination yields a strong, energy efficient, and lightweight sheet that is optimal for greenhouse applications.

#### Features at a Glance

- Superb thermal insulation — saves energy
- Impact resistance — virtually unbreakable
- Light weight
- Weather and UV resistant
- Low flammability
- Wide service temperature range
- 10-year limited warranty

**FREE CRATING**  
 on orders over 3,500 sq. ft.

#### Ask us about Green-Tek's Recycling Program!

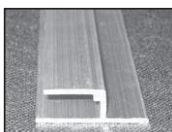
Green-Tek is the first in the horticulture industry to offer polycarbonate sheet recycling. Old, yellowed or even damaged sheets can now be recycled when they are replaced with new Green-Tek ThermaGlas or DynaGlas sheets.

*Polycarbonate and extrusion special offers end September 30, 2009.*



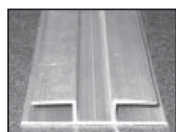
### Your Polycarbonate Extrusion Headquarters

U-Profile (single splice) and H-Profile (double splice) 8 mm extrusions are used as perimeter caps on sidewalls and gables and to splice panels on sidewalls and gables.



U-Profile

**10% OFF**  
 all extrusions ordered with 3,500 sq. ft. of polycarbonate



H-Profile

**10% OFF!**



With starting costs of \$450, it doesn't take long to get a return on investment by reducing energy usage with Bartlett Instrument controllers.

Two popular controller models, one for a heat/louver/fan house and one for a natural ventilation house, come with DIF, DAY and NITE stages. Both are affordable and easy-to-use!



Model GHK12x2



Model RWL11x2

### SCHAEFER SUMMER SPECIAL!

Schaefer Ventilation Equipment has been manufacturing a high-quality, innovative line of horticultural ventilation equipment since 1951. Call your BFG sales rep today to take advantage of our exclusive summer special pricing on the following items:

**5% OFF**

ITEM #	DESCRIPTION	LIST	SUMMER SPECIAL!
42-3020	12" Plant-Air® circulation fan	190.75	<b>\$181.21</b>
42-3021	20" Plant-Air® circulation fan	247.62	<b>\$235.39</b>
42-3040	Thermostat; heating or cooling; 40° to 110° F	72.00	<b>\$68.40</b>
23-0512	Thermostat; 2-stage heating or cooling; 2-speed cooling	159.29	<b>\$151.33</b>
44-0200	Shaded pole blower; 60 CFM; 115 volt	69.70	<b>\$66.22</b>
44-0210	Shaded pole blower; 148 CFM; 115 volt	88.04	<b>\$83.64</b>

**10% OFF** All evaporative cooling products

**15% OFF** All Galvanized exhaust fans



**SCHAEFER**

Program effective 7/16/09 through 10/09/09.